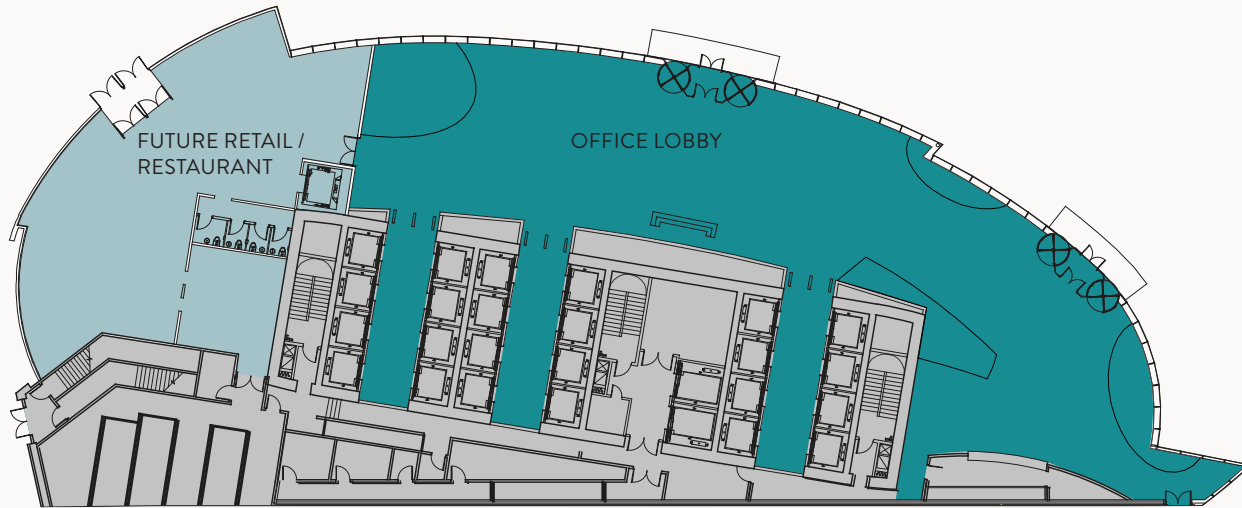
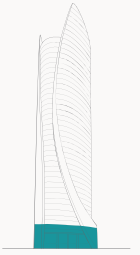


GROUND LEVEL FLOOR PLAN

23,200 GSF



CONTACT

DEVELOPMENT

The HYM Investment Group, LLC

Thomas N. O'Brien
Founding Partner + Managing Director

tobrien@hyminvestments.com
Direct: 617.248.8905

COMMERCIAL LEASING

Transwestern

John Barry
Partner

john.barry@transwestern.com
Direct: 617.439.9705
Mobile: 617.943.3927

Vicki L. Keenan
Senior Vice President, Northeast

vicki.keenan@transwestern.com
Direct: 617.933.0355

PRESS & MEDIA

InkHouse

Susan Elsbree
Vice President

susan@inkhouse.com
Mobile: 617.212.6817